

The world's finest ideas  
in cooling & preservation!



**Cold Room**  
(20°C to -40°C)

**Display  
Cold Room**  
(Front side display  
back side storage)  
(2°C to -5°C)

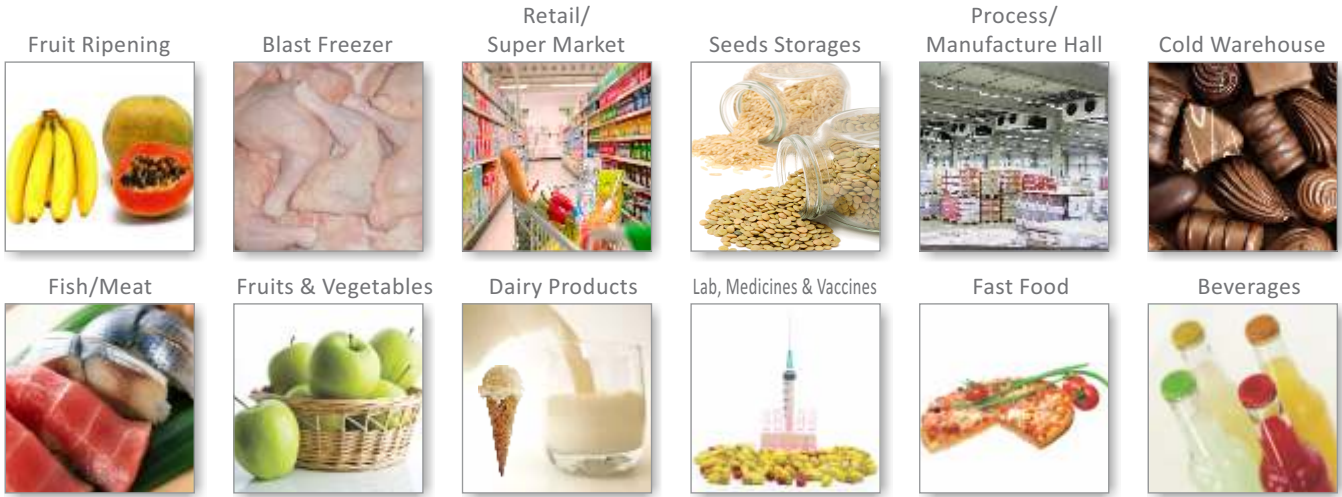



**SpaceSaver**  
(Mini Cold Room)

 **THE MIDDLEBY CORPORATION**

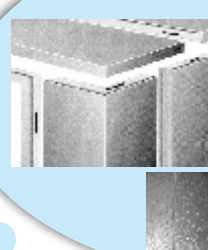
...brought to India by Celfrost,  
a Middleby Company

# Cold Rooms - Applications & Highlights

**Foamed-in-Place Polyurethane/PIR/ Rockwool**

Most advanced, high-density of 40 kg/m<sup>3</sup> PUF insulation ensures best insulating efficiency and uniform structure. Available in 60, 75, 80, 100, 125 & 150 mm thickness



**Perfect Panel Configuration**

Available in a variety of Height and Width dimensions – Walls, Floor, Door Frame, Door Leaf, Tee Walls, Corners & Ceilings. PVC Gaskets at all joints make them perfect and 100% cam locking possible.





**Hinge Doors**

Aesthetic, efficient, durable, suitable for heavy-duty usage. Flush-fit with FRP door perimeter with auto closer. Overlap & double leaf door options available for all applications



**Sliding Doors**

Sliding door available for all applications in manual & motorized options



**Digital Temperature Display cum controller**

Displays the accurate temperature inside the Coldroom. BMS connectivity & data logging option available

# Energy-efficient Refrigeration Units



Semi-Hermetic

Hermetic



Slim Type (Dual Flow)

Cubical Type

Presenting Celfrost Refrigeration Systems, with temperatures ranging from -40°C to +20°C.

## Salient Features :

- Imported & Indian energy-efficient units
- Designed for high ambient conditions
- Stainless steel or pre-painted aluminium evaporators
- Option of hermetic, semi-hermetic and scroll compressors
- Option of BMS compatible HACCP controller

## Benefits :

- Long life
- Compact
- Excellent heat transfer
- Low power consumption
- Aesthetically pleasant design

## Technical Specifications

Model No. (Outdoor Unit)	Model No. (Indoor Unit)	Refrigeration Capacity BTU / Hr.	Temp. Range (C)	Loading Temp. (C)	Max. Loading (kgs./Day)	Max. Room Volume with 8' Ht. (CFT)	Max. Room Area (SQ. FT.)	Power* (SQ. FT.) (kw)	Power Supply (V / Ph / Hz)	Defrosting
CCO-082*-H*	CSCI-082-SS#	8000	2 to 6	30	280	512	64	1.6	230 / 1 / 50	Off-cycle
CCO-122-HA	CSCI-122-SS	12000	2 to 6	30	540	960	120	2	230 / 1 / 50	Off-cycle
CCO-152-HA	CSCI-152-SS	15000	2 to 6	30	770	1360	170	2.5	230 / 1 / 50	Off-cycle
CCO-192-HA	CSCI-192-SS	19000	2 to 6	30	1000	1800	225	3	400 / 3 / 50	Off-cycle
CCO-212-HA	CKCI-212-SS	21000	2 to 6	30	1200	2080	260	3.4	400 / 3 / 50	Off-cycle
CCO-302-HA	CKCI-302-SS	30000	2 to 6	30	2200	3800	475	5.3	400 / 3 / 50	Off-cycle
CCO-412-SA	CKCI-412-SS	41000	2 to 6	30	2600	4520	565	5.7	400 / 3 / 50	Off-cycle
CFO-064-HA	CKFI-064-SS	6000	(-18 to -22)	-10	280	512	64	2	400 / 3 / 50	Electric
CFO-084-HA	CKFI-084-SS	8000	(-18 to -22)	-10	425	750	90	2.8	400 / 3 / 50	Electric
CFO-104-HA	CKFI-104-SS	10000	(-18 to -22)	-10	570	1000	125	3.4	400 / 3 / 50	Electric
CFO-144-HA	CKFI-144-SS	14000	(-18 to -22)	-10	900	1600	200	4.3	400 / 3 / 50	Electric
CFO-184-SHA	CKFI-184-SS	18000	(-18 to -22)	-10	1400	2520	315	6.2	400 / 3 / 50	Electric
CFO-234-SHA	CKFI-234-SS	23000	(-18 to -22)	-10	2000	3520	440	8.1	400 / 3 / 50	Electric

**BASIS OF DESIGN:** (A) Loading will be 10 lbs / sq.ft. per day or \*50 Kg/sqm per day. (B) Door Openings : 2 to 3 / Hr. (C) Refrigerant : R-22/R-407c/R-404a for Chiller application ( 2-6 degC room temperature) and R-404a for freezer application ( -18 to -22degC room application). (D) Supply Voltage : 200V - 240V for single phase while 380V - 460V for three-phase supply; otherwise use voltage stabiliser. (E) CC-range offered for 28°C to -5°C is with Hermetic compressors, while CF range is offered for -10°C to -40°C with Semi-Hermetic Copeland / Bitzer / Dorin / Emerson range of compressors.

Company reserves the right to change the specification without prior notice.

## Options of Condensing Unit for Freezer & Chiller Application



- 100% Imported
- Make India unit with Bitzer 100% imported compressor & accessories

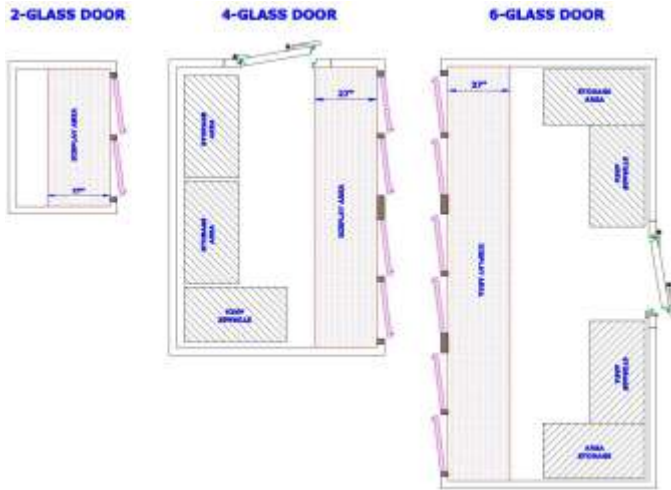


Celfrost condensing units with Hermetic compressors



- Energy Efficient Hermetic Compressors Condensing Units
- Common unit designed for R22, R404a & R407C Refrigerants
- Option with R134a Refrigerant
- Scroll units for Blast Chilling applications

# Display Cold Room (2 in 1)



## Technical Specifications:

No of Door	OVERALL DIMN. (mm)#			Storage Capacity in Liters*	Connected power
	FRONT	DEPTH	HEIGHT		
2	1665	2070	2400	6,400	1/3 Ph
3	2510	2070	2400	10,000	1/3 Ph
4	3240	2070	2400	13,200	1/3 Ph
5	3970	2070	2400	16,300	3 Ph
6	4700	2070	2400	19,400	3 Ph

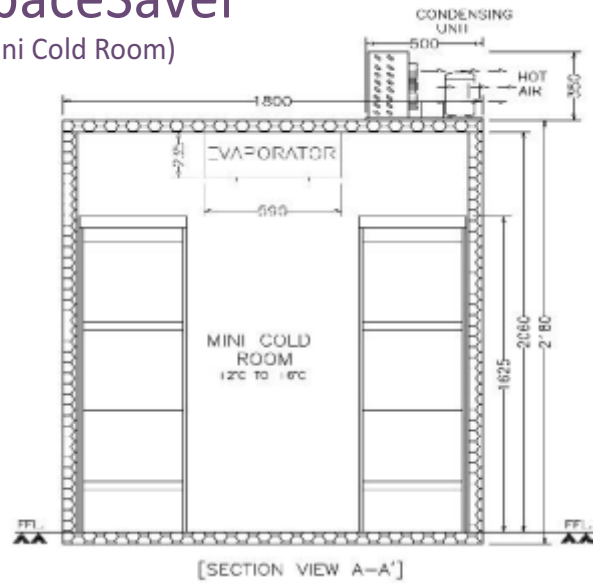
Note: Company reserves the right to change the specification without prior notice.

# Can be customised as per site conditions.

- \*Based on total internal volume (One liter of water= 0.001 M3)
  - Supplied in knock down condition and assembled at site
  - The room temperature range is 2-8°C
  - PUF Panels Thickness is 80 mm
  - LED Lightings inside
- Double layer vacuumed tempered glass doors
  - Floor finish: Aluminium Chequered plate
  - Digital temperature controller with display/GI/PPGI
  - Adjustable shelvings in front
  - Refrigeration system: SPLIT TYPE with ECO friendly refrigerant R407c/R404a

# SpaceSaver

(Mini Cold Room)



## Key Features

- Quick assembling and dismantling
- Easy assembly-refrigeration system with roof/wall hang condensing unit
- Auto closing door lock and internal release for safety
- Internal LED lighting
- 4 no. shelving system for maximum utilisation of space
- Single phase power (230 V) – standard 16A power point
- Eco friendly refrigerant - R 134a

## Specification sheet

External	Width	mm	1800
External	Depth	mm	1200
External	Height	mm	2180
Insulation (PUF)	Thickness	mm	60
Floor space (Footprint)	Area	Sq.ft.	23
Storage capacity (Gross)		Ltr.	4700
Clear door opening		mm	760 x 1830
Temperature range		°C	+2° to +8°
Refrigerant		R134a	
Compressor		Tecumseh / Equivalent	
Power supply		220V/1Ph/ 50Hz	
Connected Electric Load	Watts	1100	



## Middleby Celfrost Innovations (P) Ltd.

Corp. Office : Unit Nos. SF-713 – 716, 7th Floor, JMD Megapolis, Sohna Road, Sector 48, Gurgaon - 122 018, Haryana, India.  
Tel. : +91 124 482 8500, Fax : +91 124 427 9663, E-mail : corp@middlebycelfrost.com, Web : www.middlebycelfrost.com

Toll Free Customer Service No.: **1800-102-1980** • [service.india@middlebycelfrost.com](mailto:service.india@middlebycelfrost.com)

**ONE PARTNER. ONE TEAM. MANY SOLUTIONS.**



**For sales related queries :-**

**Call: +91 124 4828500 • Email: [sales@middlebycelfrost.com](mailto:sales@middlebycelfrost.com)**